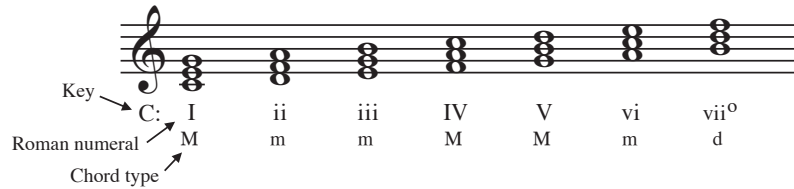


# Roman Numerals

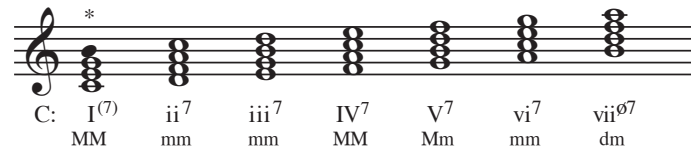
## MAJOR MODE



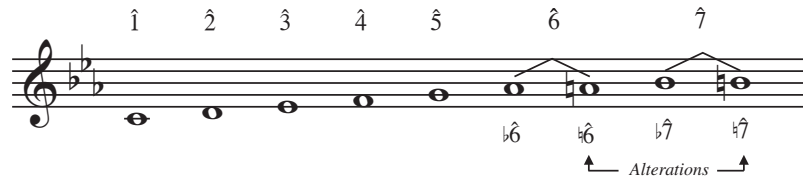
### TRIADS



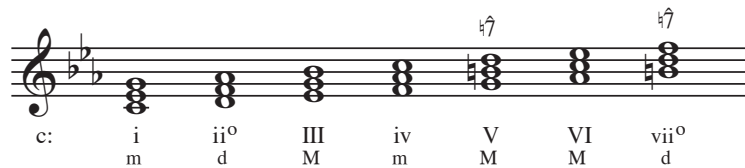
### SEVENTH CHORDS



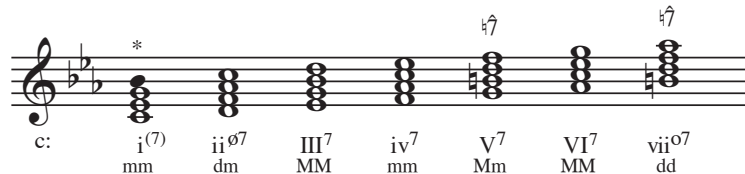
## MINOR MODE



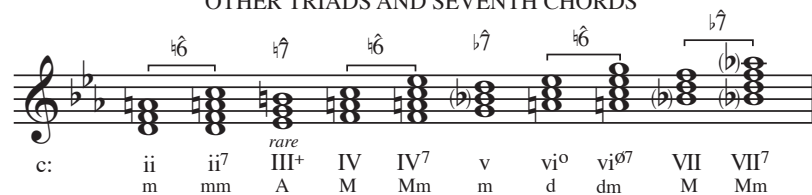
### COMMON TRIADS



### COMMON SEVENTH CHORDS



### OTHER TRIADS AND SEVENTH CHORDS



### Notes:

- In *equal temperament*, other keys may be viewed as *transpositions* of these two keys (C: & c:).
- In this Roman numeral system, there is no typographical distinction between MM & Mm chords.

\* - Although I<sup>7</sup> (in major) and i<sup>7</sup> (in minor) are common in jazz and popular music, they were rarely employed in the common-practice period as a stable tonic chord.