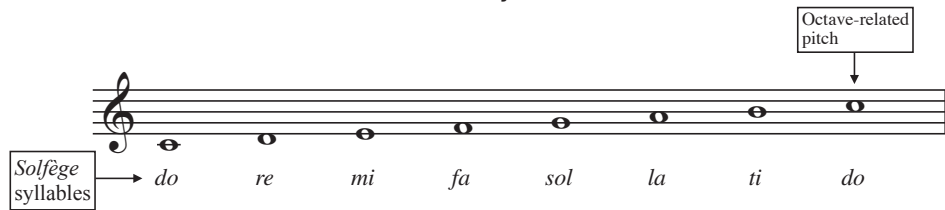
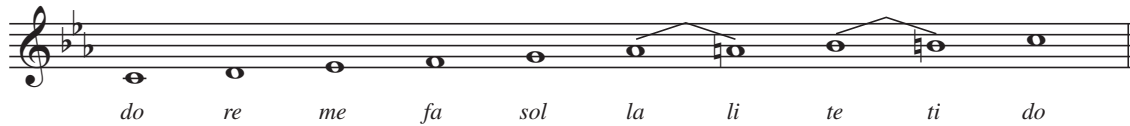


## Major and Minor Scales

### C major scale



### C minor scale



#### Notes:

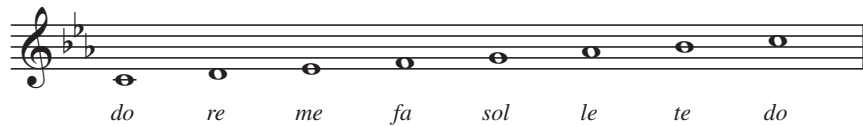
In minor, the six and seventh scale degrees are variable.

In tonal music, a scale defines a *key*. C major and C minor are *parallel* keys, whereas C major and A minor (not shown) are *relative* keys.

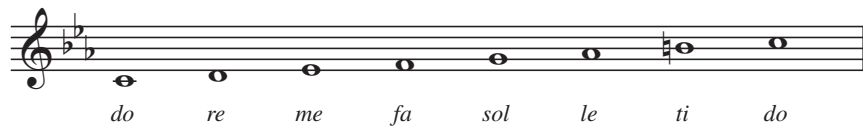
### THREE FORMS OF MINOR

As shown below for the key of C minor, the minor scale has three forms: 1. *natural*, 2. *harmonic*, and 3. *melodic*.

#### C natural minor scale



#### C harmonic minor scale



#### C melodic minor scale

